



HDB's Sales Launch – May 2018







## Nature Haven

Casa Spring @ Yishun is bounded by Yishun Street 42 and Yishun Avenue 6. It comprises 7 13-storey residential blocks. You can choose a home from 969 units of 2-room Flexi, 4-, 5-room, and 3Gen flats.

The name 'Casa Spring @ Yishun' is inspired by the lush greenery which forms the backdrop for the development, and identifies with the greenery in Yishun town.

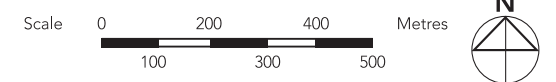
Please refer to the site plan to find out more about the facilities in Casa Spring @ Yishun. The facilities in this project will be opened to the public.



HDB precincts are planned to serve the evolving needs of the community. There are spaces catered for future inclusion of amenities/facilities (such as childcare centres, elderly-related facilities, education centres, residents' committee centres and day activity centres), commercial facilities (such as shops and eating houses), mechanical and electrical rooms and such other facilities depending on the prevailing needs. These spaces could be in the void decks, common property, car parks or stand-alone community buildings.

[illegible]

 MRT Line & Station       Under Construction / Future Road  
 (u/c) Under Construction



All proposed developments are subject to change and planning approval. Proposed Civic & Community Institution includes examples like Community Centre/Club, Association, Home for the Aged, etc., subject to change and planning approval. Proposed Health & Medical Care includes examples such as Hospitals, Polyclinics, Clinics, Nursing Homes and Eldercare Facilities, etc, subject to change and planning approval. The proposed facilities and their locations as shown are indicative only. The proposed facilities may include other ancillary uses allowed under URA's prevailing Development Control guidelines. For example, places of worship may also include columbarium as an ancillary use, while community centres may also include childcare centres, and schools may be upgraded or built with higher-rise blocks. The implementation of the facilities is subject to review from time to time by the relevant authorities.

3



## Eco-Friendly Living

To encourage an eco-friendly lifestyle, Casa Spring @ Yishun is designed with several eco-friendly features:

- Separate chutes for recyclable waste
- Motion sensor-controlled energy efficient lighting at staircases to reduce energy consumption
- Regenerative lifts to reduce energy consumption
- Eco-pedestals in bathrooms to encourage water conservation
- Bicycle stands to encourage cycling as an environmentally friendly form of transport
- Parking spaces to facilitate car-sharing schemes
- Use of sustainable and recycled products in the development
- Pneumatic Waste Conveyance System to provide cleaner waste disposal



Eco-pedestals



Separate chutes for recyclable waste



Bicycle stands

## Charming Homes

Casa Spring @ Yishun offers 2-room Flexi, 4-, 5-room, and 3Gen flats.

These flats will come with the following finishes and fittings:

<b>2-room Flexi</b> <i>Come in 2 sizes: 36sqm and 45sqm, and are available either on a 99-year lease or short-lease</i>	<b>4-, 5-room, and 3Gen</b>
<ul style="list-style-type: none"> <li>• Floor finishes in the kitchen, household shelter, and bathroom</li> <li>• Wall tiles in the kitchen and bathroom</li> <li>• A sliding partition/ door for the bedroom and folding bathroom door</li> <li>• Grab bars (for 2-room Flexi flats on short-leases)</li> </ul>	<ul style="list-style-type: none"> <li>• Floor finishes in the kitchen, household shelter, service yard, and bathrooms</li> <li>• Wall tiles in the kitchen and bathrooms</li> </ul>

All new HDB flats have Universal Design features such as wider internal corridors, and ramps at the main entrance and bathrooms.

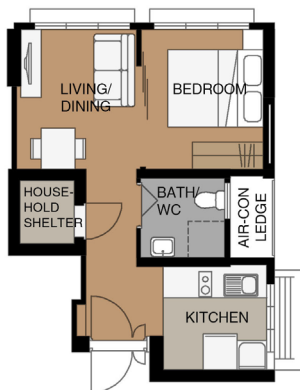
## Optional Component Scheme

The Optional Component Scheme (OCS) provides convenience for our buyers, and is offered on an opt-in basis. Please refer to the attached Optional Component Scheme leaflets for details.

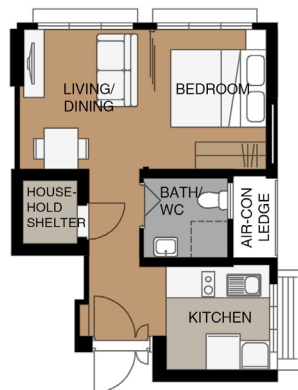
When a flat buyer opts in for the OCS, the cost of the optional components will be added to the flat price.



Without Living/ Dining/ Bedroom Floor Finishes (Default)



With Living/ Dining/ Bedroom Floor Finishes

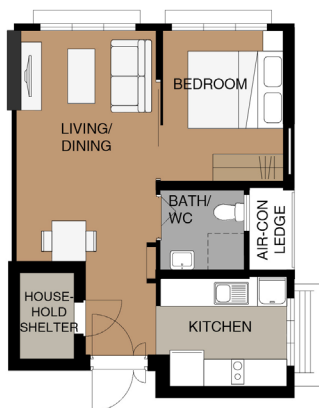


### LAYOUT IDEAS FOR 2-ROOM FLEXI (TYPE 1)

APPROX. FLOOR AREA 38 sqm  
(Inclusive of Internal Floor Area of 36 sqm and Air-con Ledge)

### LAYOUT IDEAS FOR 2-ROOM FLEXI (TYPE 1)

APPROX. FLOOR AREA 38 sqm  
(Inclusive of Internal Floor Area of 36 sqm and Air-con Ledge)



### LAYOUT IDEAS FOR 2-ROOM FLEXI (TYPE 2)

APPROX. FLOOR AREA 47 sqm  
(Inclusive of Internal Floor Area of 45 sqm and Air-con Ledge)



### LAYOUT IDEAS FOR 4-ROOM

APPROX. FLOOR AREA 93 sqm

(Inclusive of Internal Floor Area of 90 sqm and Air-con Ledge)



### LAYOUT IDEAS FOR 5-ROOM

APPROX. FLOOR AREA 113 sqm

(Inclusive of Internal Floor Area of 110 sqm and Air-con Ledge)



### LAYOUT IDEAS FOR 3GEN FLAT

APPROX. FLOOR AREA 120 sqm

(Inclusive of Internal Floor Area of 115 sqm and Air-con Ledges)





LEGEND

2-Room Flexi (Type 1)

2-Room Flexi (Type 2)

4-Room

5-Room

3Gen Flat

Surrounding Buildings / Structures

Reserved for Development / Existing Development

Linkway / Linkbridge (LB) / Shelter (S) / Drop-off Porch (DOP) / Precinct Pavilion (PP)

Trellis (T)

Children Playground (PG) / Adult Fitness Station (AFS) / Elderly Fitness Station (EFS)

Multi-Storey Car Park

Utility Centre (UC) at 1st Storey

Future Amenities / Facilities (FA/F) at 1st Storey

Electrical Sub-Station (ESS) at 1st Storey

Open Space

Staircase

Driveway

Centralised Refuse Chute/  
Chute for Recyclable Refuse (Pneumatic Waste Conveyance System)

Lift

Corridor

Service Bay

U/C Under Construction

Block Number	Number of Storeys	2 Room Flexi		4 Room	5 Room	3Gen Flat	Total	Lift opens at
		Type 1	Type 2					
465A	13	24	72	48	–	–	144	Every Storey
465B	13	48	93	48	–	–	189	Every Storey
466A	13	24	72	48	–	–	144	Every Storey
466B	13	24	72	48	–	–	144	Every Storey
467A	13	–	–	36	72	12	120	Every Storey
467B	13	–	–	36	72	12	120	Every Storey
467C	13	–	–	48	36	24	108	Every Storey
Total		120	309	312	180	48	969	

Applicants are encouraged to visit the place before booking a flat.



- Notes:
1. All proposed developments are subject to change and planning approval.

2. The proposed facilities and their locations as shown are indicative only. The proposed facilities may include other ancillary uses allowed under URA's prevailing Development Control guidelines. For example, places of worship may also include columbarium as an ancillary use, while community centres may also include childcare centres, and schools may be upgraded or built with higher-rise blocks. The implementation of the facilities is subject to review from time to time by the relevant authorities.

3. The use of the void deck in any apartment block, common property (such as precinct pavilion), car park or stand-alone community building for future amenities/facilities (such as childcare centres, elderly-related facilities, education centres, residents' committee centres and day activity centres), commercial facilities (such as shops and eating houses), mechanical and electrical rooms and such other facilities is subject to review from time to time.

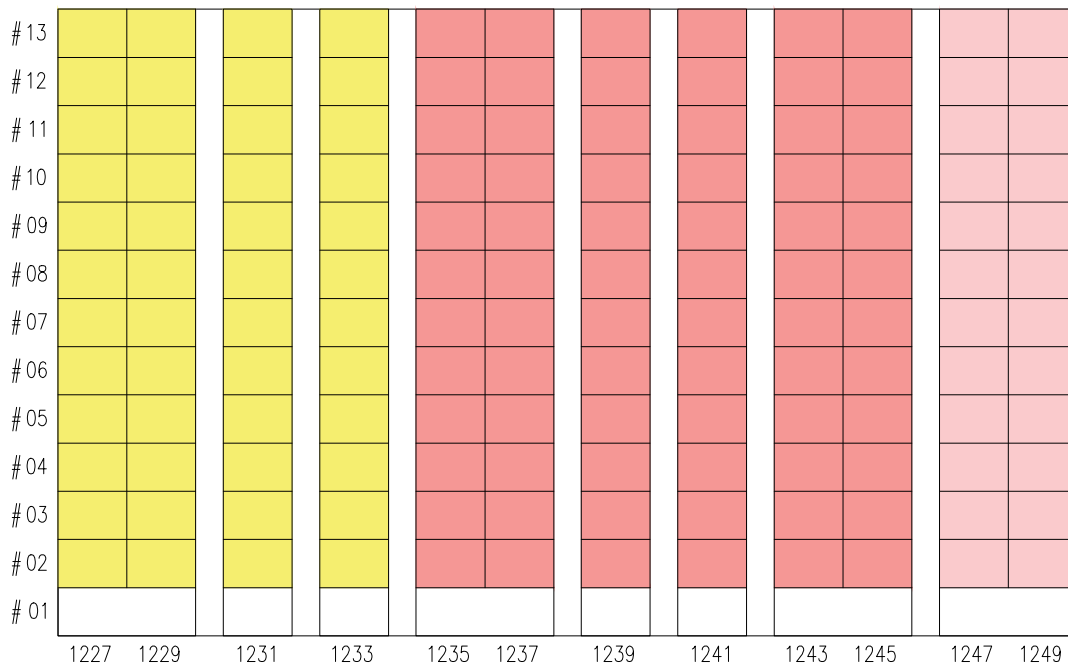
4. The residential blocks may be completed ahead of the proposed precinct facilities, so that flat buyers are able to collect the keys to their new homes earlier.

5. Unless otherwise indicated in the sales brochure, all facilities within the project, including but not limited to roof gardens and sky terraces (if any), will be open to the public.

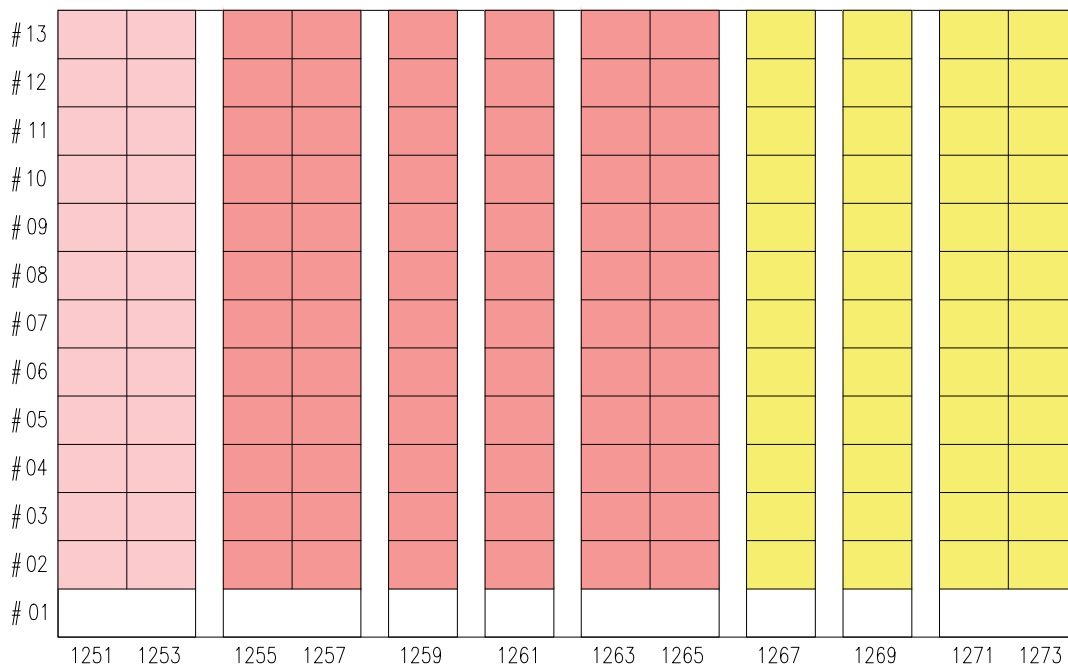
The information contained herein is subject to change at any time without notice and cannot form part of an offer or contract. While reasonable care has been taken in providing this information, HDB shall not be responsible in any way for any damage or loss suffered by any person whether directly or indirectly as a result of reliance on the said information or as a result of any error or omission therein.





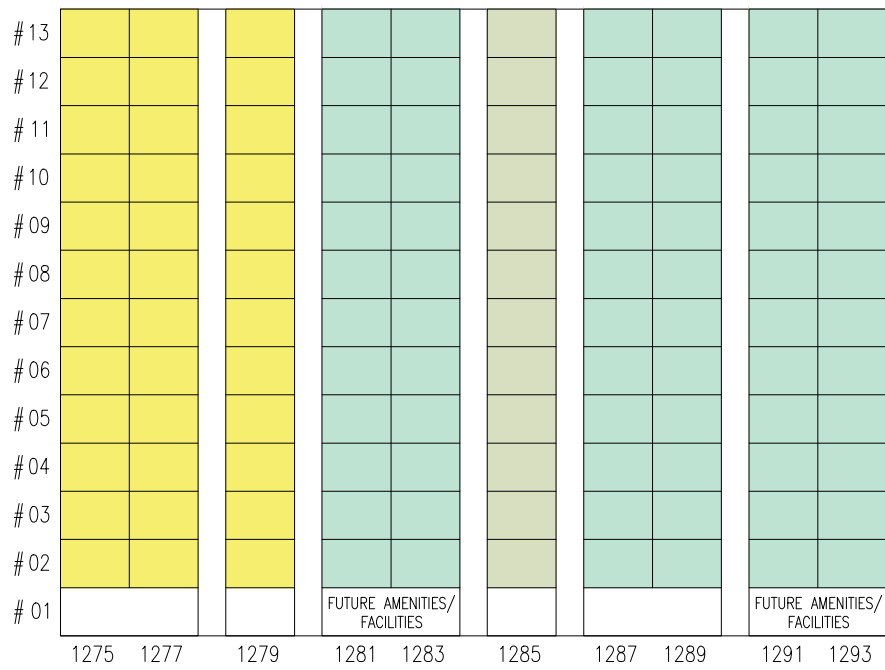


BLOCK 466A

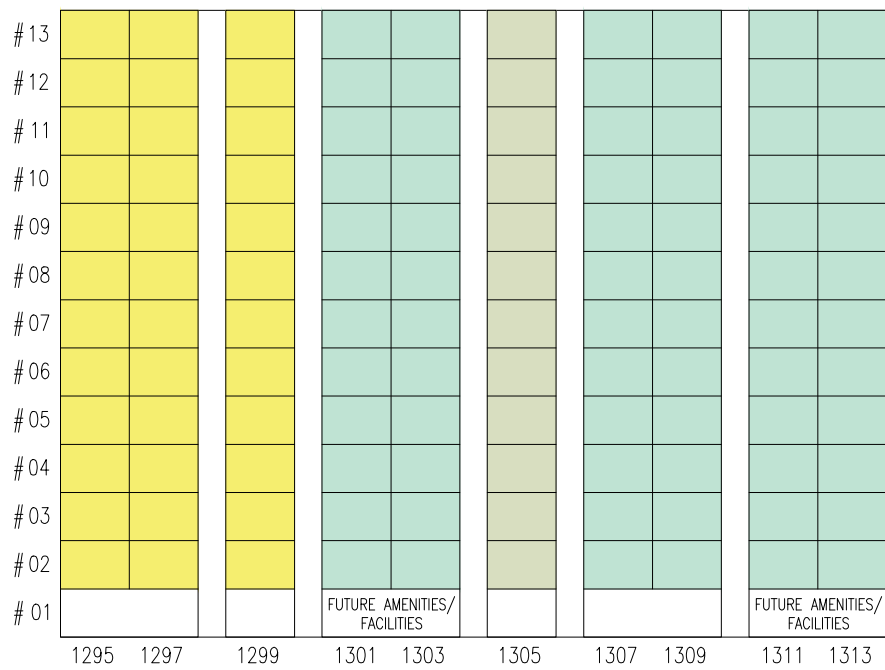
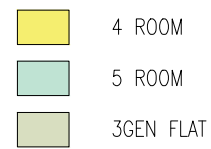


BLOCK 466B

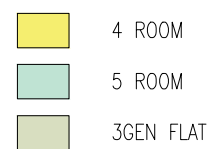




BLOCK 467A



BLOCK 467B





# 13									
# 12									
# 11									
# 10									
# 09									
# 08									
# 07									
# 06									
# 05									
# 04									
# 03									
# 02									
# 01	FUTURE AMENITIES/ FACILITIES								
	1315	1317	1319	1321	1323	1325	1327	1329	1331

## BLOCK 467C

	4 ROOM
	5 ROOM
	3GEN FLAT



## BLOCK 465A

### (2ND TO 8TH STOREY FLOOR PLAN)

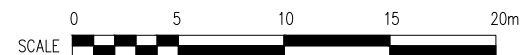
UNITS AT AND ABOVE 3RD STOREY ARE HIGHER THAN THE MAIN ROOF LEVEL OF BLOCK 464

FOR 2-ROOM FLEXI (TYPE 1) FLATS, THE NUMBER OF PANELS FOR THE SLIDING PARTITION BETWEEN THE BEDROOM AND LIVING ROOM WILL DIFFER DEPENDING ON THE SELECTION OF THE OPTIONAL COMPONENT SCHEME (OCS), WHERE APPLICABLE

#### WINDOW LEGEND:

W1 – THREE QUARTER HEIGHT WINDOW (Approx. 550mm HIGH PARAPET WALL)

UNLESS OTHERWISE INDICATED ALL WINDOWS WILL BE STANDARD HEIGHT WINDOWS



THE COLOURED FLOOR PLAN IS NOT INTENDED TO DEMARCAT THE BOUNDARY OF THE FLAT.





## BLOCK 465A (9TH STOREY FLOOR PLAN)

UNITS AT AND ABOVE 3RD STOREY ARE HIGHER THAN THE MAIN ROOF LEVEL OF BLOCK 464

FOR 2-ROOM FLEXI (TYPE 1) FLATS, THE NUMBER OF PANELS FOR THE SLIDING PARTITION BETWEEN THE BEDROOM AND LIVING ROOM WILL DIFFER DEPENDING ON THE SELECTION OF THE OPTIONAL COMPONENT SCHEME (OCS), WHERE APPLICABLE

### WINDOW LEGEND:

W1 – THREE QUARTER HEIGHT WINDOW (Approx. 550mm HIGH PARAPET WALL)

UNLESS OTHERWISE INDICATED ALL WINDOWS WILL BE STANDARD HEIGHT WINDOWS



THE COLOURED FLOOR PLAN IS NOT INTENDED TO DEMARCAT THE BOUNDARY OF THE FLAT.



## BLOCK 465A (10TH TO 13TH STOREY FLOOR PLAN)

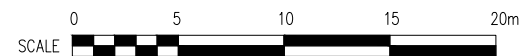
UNITS AT AND ABOVE 3RD STOREY ARE HIGHER THAN THE MAIN ROOF LEVEL OF BLOCK 464

FOR 2-ROOM FLEXI (TYPE 1) FLATS, THE NUMBER OF PANELS FOR THE SLIDING PARTITION BETWEEN THE BEDROOM AND LIVING ROOM WILL DIFFER DEPENDING ON THE SELECTION OF THE OPTIONAL COMPONENT SCHEME (OCS), WHERE APPLICABLE

### WINDOW LEGEND:

W1 – THREE QUARTER HEIGHT WINDOW (Approx. 550mm HIGH PARAPET WALL)

UNLESS OTHERWISE INDICATED ALL WINDOWS WILL BE STANDARD HEIGHT WINDOWS



THE COLOURED FLOOR PLAN IS NOT INTENDED TO DEMARCAT THE BOUNDARY OF THE FLAT.



## BLOCK 465B (2ND STOREY FLOOR PLAN)

UNITS AT AND ABOVE 11TH STOREY ARE HIGHER THAN THE MAIN ROOF GARDEN LEVEL OF MSCP BLOCK 465

FOR 2-ROOM FLEXI (TYPE 1) FLATS, THE NUMBER OF PANELS FOR THE SLIDING PARTITION BETWEEN THE BEDROOM AND LIVING ROOM WILL DIFFER DEPENDING ON THE SELECTION OF THE OPTIONAL COMPONENT SCHEME (OCS), WHERE APPLICABLE

### WINDOW LEGEND:

W1 - THREE QUARTER HEIGHT WINDOW (Approx. 550mm HIGH PARAPET WALL)

UNLESS OTHERWISE INDICATED ALL WINDOWS WILL BE STANDARD HEIGHT WINDOWS



THE COLOURED FLOOR PLAN IS NOT INTENDED TO DEMARCAT THE BOUNDARY OF THE FLAT.







## BLOCK 465B (9TH STOREY FLOOR PLAN)

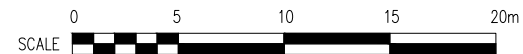
UNITS AT AND ABOVE 11TH STOREY ARE HIGHER THAN THE MAIN ROOF GARDEN LEVEL OF MSCP BLOCK 465

FOR 2-ROOM FLEXI (TYPE 1) FLATS, THE NUMBER OF PANELS FOR THE SLIDING PARTITION BETWEEN THE BEDROOM AND LIVING ROOM WILL DIFFER DEPENDING ON THE SELECTION OF THE OPTIONAL COMPONENT SCHEME (OCS), WHERE APPLICABLE

### WINDOW LEGEND:

W1 - THREE QUARTER HEIGHT WINDOW (Approx. 550mm HIGH PARAPET WALL)

UNLESS OTHERWISE INDICATED ALL WINDOWS WILL BE STANDARD HEIGHT WINDOWS



THE COLOURED FLOOR PLAN IS NOT INTENDED TO DEMARCAT THE BOUNDARY OF THE FLAT.



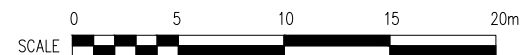
## BLOCK 466A (2ND TO 13TH STOREY FLOOR PLAN)

FOR 2-ROOM FLEXI (TYPE 1) FLATS, THE NUMBER OF PANELS FOR THE SLIDING PARTITION BETWEEN THE BEDROOM AND LIVING ROOM WILL DIFFER DEPENDING ON THE SELECTION OF THE OPTIONAL COMPONENT SCHEME (OCS), WHERE APPLICABLE

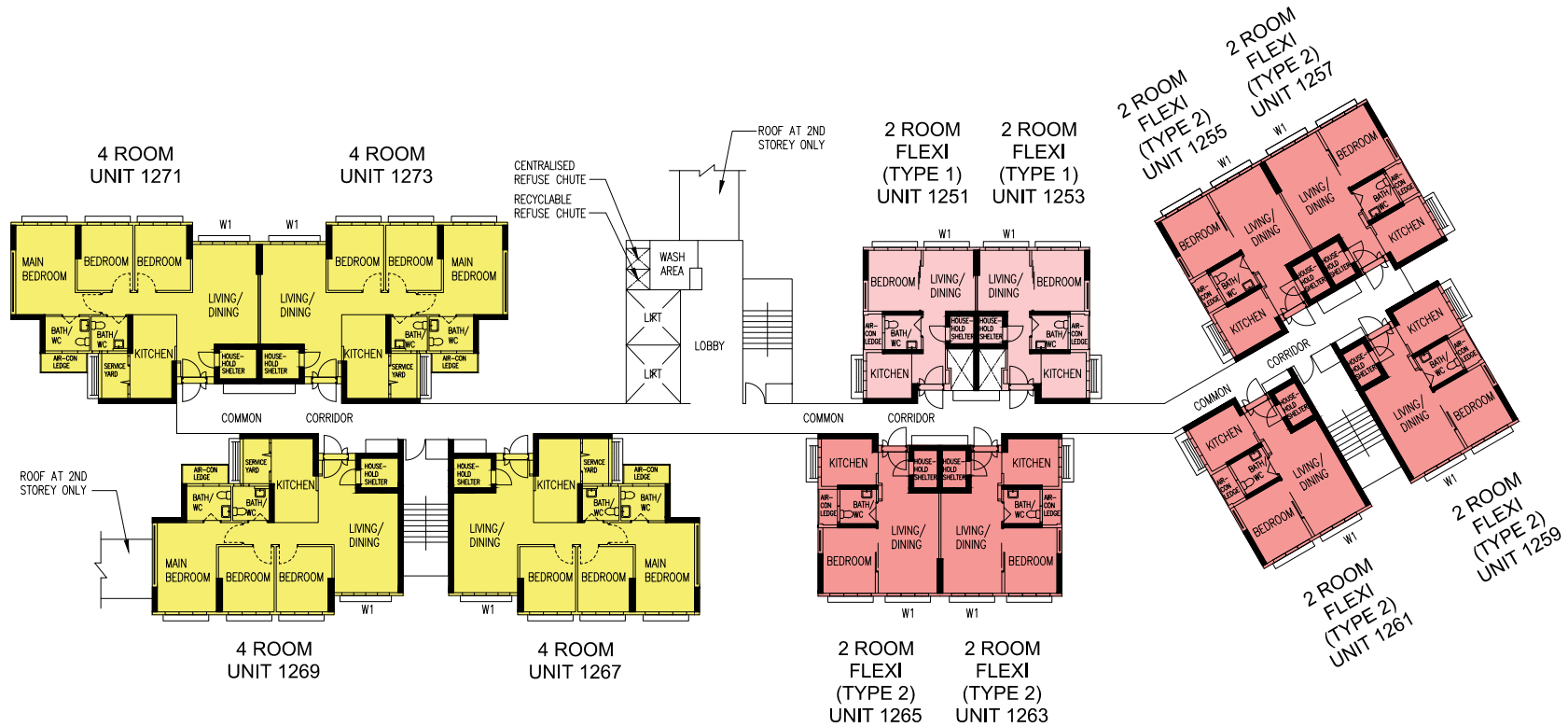
### WINDOW LEGEND:

W1 – THREE QUARTER HEIGHT WINDOW (Approx. 550mm HIGH PARAPET WALL)

UNLESS OTHERWISE INDICATED ALL WINDOWS WILL BE STANDARD HEIGHT WINDOWS



THE COLOURED FLOOR PLAN IS NOT INTENDED TO DEMARCAT THE BOUNDARY OF THE FLAT.



## BLOCK 466B

(2ND TO 13TH STOREY FLOOR PLAN)

FOR 2-ROOM FLEXI (TYPE 1) FLATS, THE NUMBER OF PANELS FOR THE SLIDING PARTITION BETWEEN THE BEDROOM AND LIVING ROOM WILL DIFFER DEPENDING ON THE SELECTION OF THE OPTIONAL COMPONENT SCHEME (OCS), WHERE APPLICABLE

### WINDOW LEGEND:

W1 – THREE QUARTER HEIGHT WINDOW (Approx. 550mm HIGH PARAPET WALL)

UNLESS OTHERWISE INDICATED ALL WINDOWS WILL BE STANDARD HEIGHT WINDOWS



THE COLOURED FLOOR PLAN IS NOT INTENDED TO DEMARCATATE THE BOUNDARY OF THE FLAT.







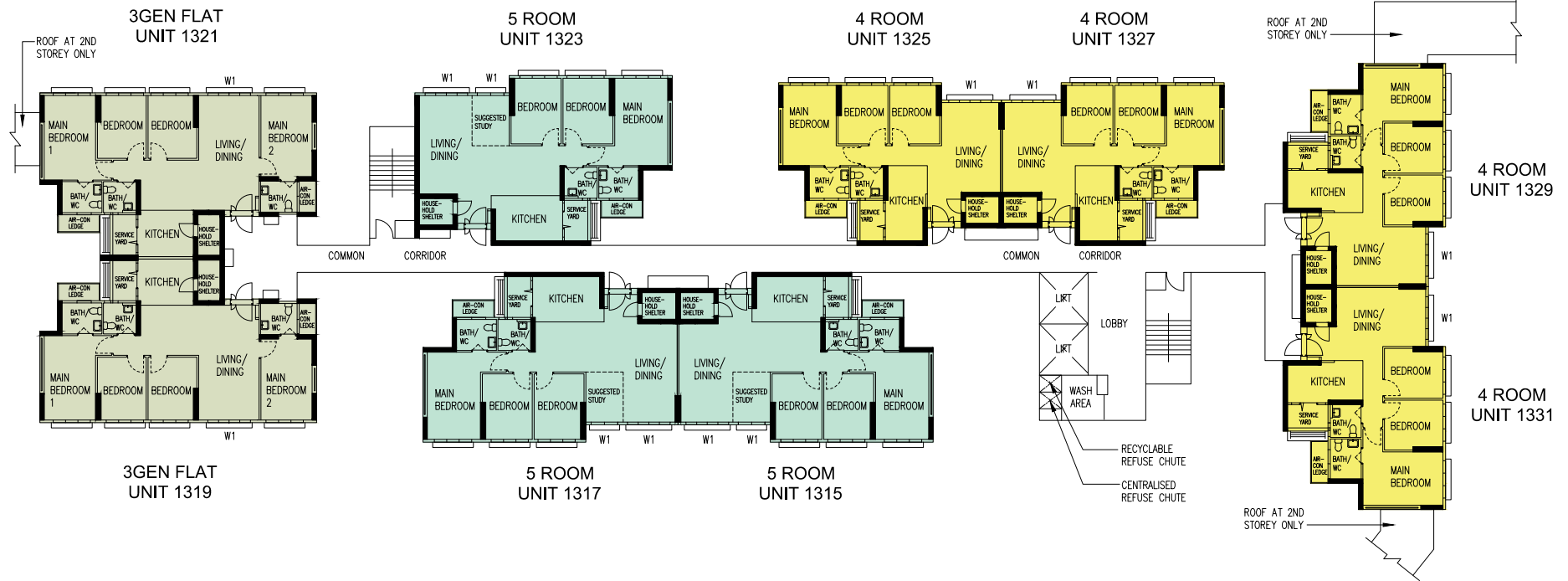
**BLOCK 467B**  
(2ND TO 13TH STOREY FLOOR PLAN)

**WINDOW LEGEND:**

W1 - THREE QUARTER HEIGHT WINDOW (Approx. 550mm HIGH PARAPET WALL)  
UNLESS OTHERWISE INDICATED ALL WINDOWS WILL BE STANDARD HEIGHT WINDOWS



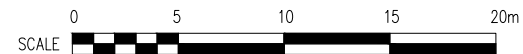
THE COLOURED FLOOR PLAN IS NOT INTENDED TO DEMARCAT THE BOUNDARY OF THE FLAT.



**BLOCK 467C**  
(2ND TO 13TH STOREY FLOOR PLAN)

**WINDOW LEGEND:**

W1 - THREE QUARTER HEIGHT WINDOW (Approx. 550mm HIGH PARAPET WALL)  
UNLESS OTHERWISE INDICATED ALL WINDOWS WILL BE STANDARD HEIGHT WINDOWS



THE COLOURED FLOOR PLAN IS NOT INTENDED TO DEMARCAT THE BOUNDARY OF THE FLAT.

## General Specifications For Casa Spring @ Yishun

For 2-room Flexi (short lease)

### Foundation

Piled foundations.

### Structure

Reinforced concrete structural framework with reinforced concrete slabs.

### Roof

Reinforced concrete roof slab with precast concrete secondary roofing.

### Walls

All external and internal walls are constructed with reinforced concrete/ solid blocks/ bricks with cement plastering/ precast panels/ precast lightweight concrete partitions/ drywall partition system.

### Windows

Aluminium framed windows with tinted glass.

### Doors

Entrance	: decorative timber door and metal gate
Bedroom	: laminated UPVC sliding partition/ door, where applicable
Bathroom/ WC	: laminated UPVC folding door
Household Shelter	: metal door

### Finishes

Ceilings	: skim coated or plastered and painted
Kitchen/ Bathroom/ WC Walls	: ceramic tiles
Other Walls	: skim coated or plastered and painted
Living/ Dining/Bedroom Floor	: vinyl strip flooring with laminated UPVC skirting (optional)
Kitchen Floor	: glazed porcelain tiles
Bathroom/ WC Floor	: ceramic tiles
Household Shelter Floor	: glazed porcelain tiles

### Fittings

Quality Locksets  
Water Closet Suite  
Clothes Drying Rack  
Grab Bars  
Wash basin with tap mixer, bath/ shower mixer with shower set (optional)  
Built-in kitchen cabinets with induction hob and cooker hood, kitchen sink and dish drying rack (optional)  
Built-in Wardrobe (optional)  
Window Grilles (optional)  
Water Heater (optional)  
Lighting (optional)

### Services

Gas services and concealed water supply pipes  
Exposed sanitary stacks at Air-con ledge  
Concealed electrical wiring to lighting and power points (including water heater and air-conditioning points)  
Television points  
Data points

### Important Notes

- 1) The Household Shelter is designed for use as civil defence shelter. The walls, ceiling, floor and door of the Household Shelter shall not be hacked, drilled, altered or removed.
- 2) Air-con panel in the main bedroom will not be provided.
- 3) Laminated UPVC door frame shall be provided to all Bedroom and Bathroom/ WC door openings.
- 4) Any unused or unoccupied open spaces in front of or nearby/ adjacent to the flat units are not available for purchase and the HDB will not entertain any request from the flat owners to purchase and/ or enclose the unused or unoccupied open spaces.
- 5) The details of services in a flat, e.g. gas pipes, water pipes, sanitary stacks, electrical wiring, television points, data points, etc. are not indicated on the plans.

You are advised to visit HDB's website at [www.hdb.gov.sg](http://www.hdb.gov.sg) for information on renovation rules.

## General Specifications For Casa Spring @ Yishun

For 2-room Flexi, 4-room, 5-room & 3Gen Flat

### Foundation

Piled foundations.

### Structure

Reinforced concrete structural framework with reinforced concrete slabs.

### Roof

Reinforced concrete roof slab with precast concrete secondary roofing.

### Walls

All external and internal walls are constructed with reinforced concrete/ solid blocks/ bricks with cement plastering/ precast panels/ precast lightweight concrete partitions/ drywall partition system.

### Windows

Aluminium framed windows with tinted glass.

### Doors

Entrance	: decorative timber door and metal gate
Bedroom	: laminated UPVC door (optional)
	: laminated UPVC sliding partition/ door for 2-room Flexi, where applicable
Bathroom/ WC	: laminated UPVC folding door (optional)
	: laminated UPVC folding door for 2-room Flexi
Household Shelter	: metal door
Service Yard	: aluminium framed door with glass

### Finishes

Ceilings	: skim coated or plastered and painted
Kitchen/ Bathroom/ WC Walls	: ceramic tiles
Other Walls	: skim coated or plastered and painted
Living/ Dining Floor	: polished porcelain tiles with laminated UPVC skirting (optional)
Bedroom Floor	: vinyl strip flooring with laminated UPVC skirting (optional)
Living/ Dining/ Bedroom Floor	: vinyl strip flooring with laminated UPVC skirting for 2-room Flexi (optional)
Kitchen Floor	: glazed porcelain tiles
Bathroom/ WC Floor	: ceramic tiles
Service Yard Floor	: glazed porcelain tiles with tile skirting
Household Shelter Floor	: glazed porcelain tiles

### Fittings

Quality Locksets  
Water Closet Suite  
Clothes Drying Rack  
Wash basin with tap mixer, bath/ shower mixer with shower set (optional)

### Services

Gas services and concealed water supply pipes  
Exposed sanitary stacks (which can be located at Service Yard and/ or Air-con ledge)  
Concealed electrical wiring to lighting and power points (including water heater and air-conditioning points)  
Television points  
Data points

### Important Notes

- 1) The Household Shelter is designed for use as civil defence shelter. The walls, ceiling, floor and door of the Household Shelter shall not be hacked, drilled, altered or removed.
- 2) Air-con panel in the main bedroom will not be provided.
- 3) Laminated UPVC door frame shall be provided to all Bedroom and Bathroom/ WC door openings.
- 4) Any unused or unoccupied open spaces in front of or nearby/ adjacent to the flat units are not available for purchase and the HDB will not entertain any request from the flat owners to purchase and/ or enclose the unused or unoccupied open spaces.
- 5) The details of services in a flat, e.g. gas pipes, water pipes, sanitary stacks, electrical wiring, television points, data points, etc. are not indicated on the plans.

You are advised to visit HDB's website at [www.hdb.gov.sg](http://www.hdb.gov.sg) for information on renovation rules.

# Disclaimer

- 1) HDB owns the copyright in all information, maps, and plans of this brochure.
- 2) The content provided in this brochure is not intended to form part of any offer or contract for the sale of flats. They are provided for your general information only, and are not statements or representations of fact.
- 3) Visual representations, such as pictures, art renderings, depictions, illustrations, photographs, drawings, as well as other graphic representations and references, are only artistic impressions. They are provided for your general information only, and are not representations of fact.
- 4) The information on this project, including but not limited to the dimensions, areas, plans, colour schemes, descriptions, and specifications, are subject to change or review without notice at our sole discretion or if required by the relevant authorities.
- 5) We may at any time, without any notice and at our sole discretion, change any aspect of this project, including but not limited to the omission, amalgamation, increase, or reduction of amenities and facilities, colour schemes, design features, and specifications.
- 6) We will not entertain any request for alteration of the layout or specifications of a flat to suit individual needs.
- 7) While reasonable care has been taken in providing the information in this brochure, we do not warrant its accuracy. We shall not be responsible in any way for any damage or loss suffered by any person whether directly or indirectly as a result of reliance on the said information or as a result of any error or omission therein.
- 8) The floor areas shown are scaled strata areas and subject to final survey.
- 9) The surrounding land use, proposed facilities and their locations as shown in the maps and plans are indicative only and subject to change. They may include ancillary uses allowed under the Urban Redevelopment Authority's prevailing Development Control guidelines.
- 10) We reserve the right to use or allow the use of
  - the void deck in any Apartment block,
  - Car park;
  - Common property (such as precinct pavilion); or
  - Standalone community building,for:
  - Future amenities/ facilities (such as child care centres, elderly-related facilities, education centres, residents' committee centres, and day activity centres);
  - Commercial facilities (such as shops and eating houses);
  - Mechanical and electrical rooms; and
  - Such other facilities as we deem fit.
- 11) This brochure does not and is not intended to provide full and complete information of the guidelines or requirements of the relevant authorities. You are advised to approach the relevant authorities directly for full information and details of these guidelines and requirements.





Copyright © Housing & Development Board  
All rights reserved. June 2018

# OPTIONAL COMPONENT SCHEME (2-ROOM FLEXI FLATS)

The Optional Component Scheme (OCS) provides convenience for flat buyers, and is offered on an opt-in basis. Choose the OCS items you want before your flat selection appointment. The cost of the OCS items will be added to the selling price of the selected flat.

The 2-room Flexi flats come in 2 sizes: 36sqm and 45sqm, and are available either on a 99-year lease or short-lease.

All 2-room Flexi flats come with:

- floor finishes in the kitchen, household shelter and bathroom
- wall tiles in the kitchen and bathroom
- sliding partition/ door for bedroom; folding bathroom door
- water closet suite in the bathroom



Grab bars will be installed for all short-lease flats to assist elderly buyers in moving around the flats

## FOR ALL 2-ROOM FLEXI FLATS

### PACKAGE 1

- Flooring in the living/ dining room and bedroom
- 3-panel sliding partition, separating the living room and bedroom (for 36sqm 2-room Flexi flat only)

Note:

*Those who opted out of Package 1 will be provided with a 2-panel sliding partition and short wall separating living room and bedroom.*



3-panel sliding partition



2-panel sliding partition

### PACKAGE 2

- Sanitary fittings, i.e. washbasin with tap mixer and shower set with bath/ shower mixer



Disclaimer: All displays and images shown here are strictly for reference only and are subject to change without notice. The displays and images shown here are conceptual and indicative only and the colour schemes, design, dimensions, type, tonal differences and specifications may differ from the actual fittings installed in the flat.

November 2017

# OPTIONAL COMPONENT SCHEME (2-ROOM FLEXI FLATS)

FOR SHORT-LEASE 2-ROOM FLEXI FLATS ONLY

**PACKAGE 3** offers elderly buyers the convenience of having a flat in move-in condition. It comprises:

## ELDERLY-FRIENDLY FITTINGS



- Built-in kitchen cabinets with induction hob and cooker hood, kitchen sink, tap and dish drying rack.



Here are some features of an induction hob:

- It does not produce an open flame
- Its cooking zone cools down faster
- It is easier to clean than a gas hob
- As it has a flat surface, pots placed on an induction hob are less likely to topple over.

With these features, the use of the induction hob would promote a safer and cleaner environment.

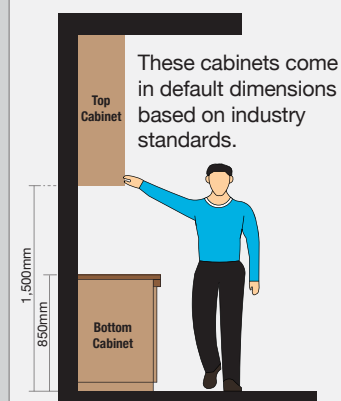


- Kitchen cabinets come with mobile cabinets to provide knee space (especially for wheelchair users)
- Built-in bedroom wardrobe with a lower clothes hanging rod for easy reach

- An option to have a lower counter top height

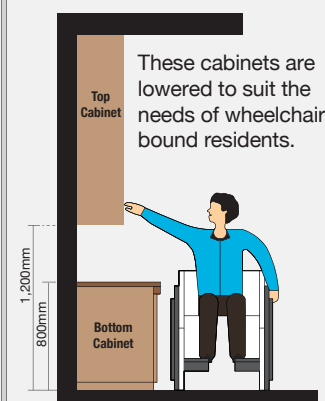
### Option A (Default):

- Bottom Cabinet at 850mm height (from floor level)
- Top Cabinet at 1,500mm height (from floor level)



### Option B:

- Bottom Cabinet at 800mm height (from floor level)
- Top Cabinet at 1,200mm height (from floor level)



Note: This drawing is not drawn to scale. All dimensions are approximate only.

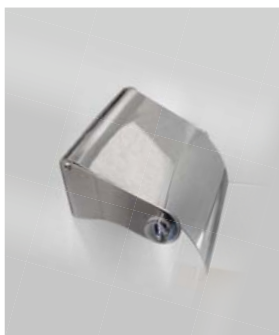
## OTHER FITTINGS



- Window grilles for safety and security



- Mirror



- Toilet roll holder



- Lighting (whole unit)



- Water heater

**Buyers who opt for Package 3 must select Package 1.**

*Disclaimer: All displays and images shown here are strictly for reference only and are subject to change without notice. The displays and images shown here are conceptual and indicative only and the colour schemes, design, dimensions, type, tonal differences and specifications may differ from the actual fittings installed in the flat.*

November 2017



**HOUSING &  
DEVELOPMENT  
BOARD**

# OPTIONAL COMPONENT SCHEME (3-, 4-, 5-ROOM AND 3GEN FLATS)

The Optional Component Scheme (OCS) provides convenience for flat buyers, and is offered on an opt-in basis. Choose the OCS items you want before your flat selection appointment. The cost of the OCS items will be added to the selling price of the selected flat.

The 3-, 4-, 5-room and 3Gen flats come with:

- floor finishes in the kitchen, household shelter, service yard and bathrooms
- wall tiles in the kitchen and bathrooms
- water closet suite in each bathroom

## YOU CAN CHOOSE TO HAVE THE FOLLOWING ITEMS INSTALLED IN YOUR SELECTED FLAT:

- Floor finishes for living/ dining room and bedrooms
- Internal doors + sanitary fittings
  - wash basin with tap mixer
  - shower set with bath/ shower mixer



Wash basin with tap mixer in attached bathroom



Wash basin with tap mixer



Handheld shower set with bath/ shower mixer

*Disclaimer: All displays and images shown here are strictly for reference only and are subject to change without notice. The displays and images shown here are conceptual and indicative only and the colour schemes, design, dimensions, type, tonal differences and specifications may differ from the actual fittings installed in the flat.*

November 2017